

Request For Proposal Al Shifa Trust Eye Hospital in Lahore, Pakistan

1. Objectives

- To establish a world-class eye hospital that combines cutting-edge medical technology with patient-centered design, serving the people of Lahore and surrounding regions.
- To improve access to quality eye care for the population of Lahore and surrounding areas.
- To incorporate advanced medical technology and sustainable design principles.
- To provide Eye Cancer treatment

2. Scope of Work Design and Planning:

- Landscape design and utilization plan of hospital premises spread over an area of approximately 300,000 (Three Lac) Sft
 - The proposed hospital building should be vertically configured. The design should have provision for future expansion without affecting the overall facade and functionality of the hospital
 - Architectural design of the hospital, including outpatient departments, inpatient wards, operating theaters, diagnostic centers and centralized pharmacy.
 - Administrative Block Including (IT, Finance, Core Administration, Procurement, Quality Assurance, Bio Medical, Medical Records)
 - Structural design to be done later once architectural and internal utilization plan is finalized
 - Interior design including furnishing focusing on patient comfort and functionality.
 - Installation of medical equipment and IT infrastructure.
 - Doctors and staff single accommodation
 - Ancillary Services (Centralized Pharmacy, Waste Management, Laundry)

 - External services design

 - Incorporation of energy-efficient systems and green building practices
- **Functional Requirements:**
 - Total no of patients per day 2000 in OPD. Broad distribution in each sub specialties is as under:-

- New Patient Registration
- General Ophthalmology 1000
- Retina 300
- pediatric ophthalmology 300
- Cornea 100
- Glaucoma 100
- Oculoplastic 100
- Eye cancer 100
- Clinical Trial and Research Center
- 150 bedded hospital with additional capacity of 150 day care patients (75 male and 75 Female)
- 25 OT tables, 50 consultation rooms, and diagnostic facilities.
- Eye care diagnostic facility and pathology lab including basic Radiology services
- **Design Requirements:**
 - Patient-centric design with emphasis on accessibility and comfort.
 - Elaborate arrangements for patient flow avoiding overcrowding
 - Infection control measures and hygiene standards.
 - Compliance with local, international building codes and healthcare regulations.
 - Use of advanced medical technology and equipment.

3. Evaluation Criteria

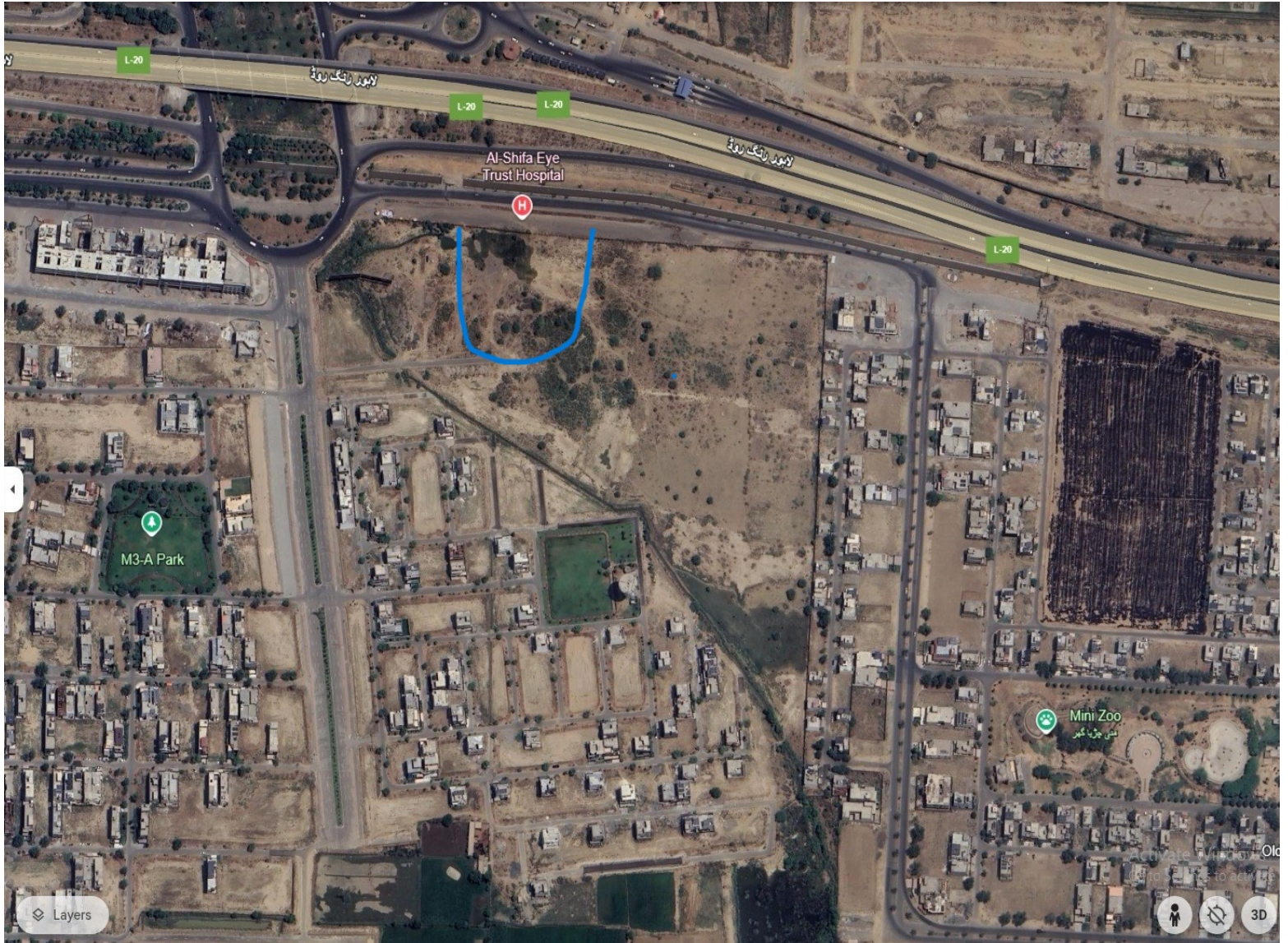
- **Technical Expertise:** Experience in designing and constructing healthcare facilities, especially eye hospitals.
- **Innovation:** Use of innovative design and technology solutions.
- **Sustainability:** Incorporation of sustainable and energy-efficient practices.
- **Cost:** Reasonableness and transparency of the proposed budget.
- **Timeline:** Feasibility of the proposed project timeline.
- **Past Performance:** Track record of successful completion of similar projects.

4. Submission Guidelines

- **Submission Deadline:** The proposal be submitted by 1400 hrs, 25th March 2025
- **Submission Method:** Through mail followed by hard copies.
- **Contact Information:** Director Projects, Al Shifa Trust Eye Hospital Jhelum Road Rawalpindi Pakistan, +92515487821-5, Ext 280. Email: directorprojects@alshifaeye.org

5. Attachments

- Location of site



- Site Plan

